

## Product 272005



### 272005 Mount with tilt swivel

The choice for you who want to have your device within easy reach, attached onto a ProClip instead of on the windshield suction mount. You can easily take the device with you when leaving the vehicle. The holder is equipped with a tilt swivel so it can be adjusted in order to avoid light reflection on the screen. Attach onto ProClip Mounting Platform.

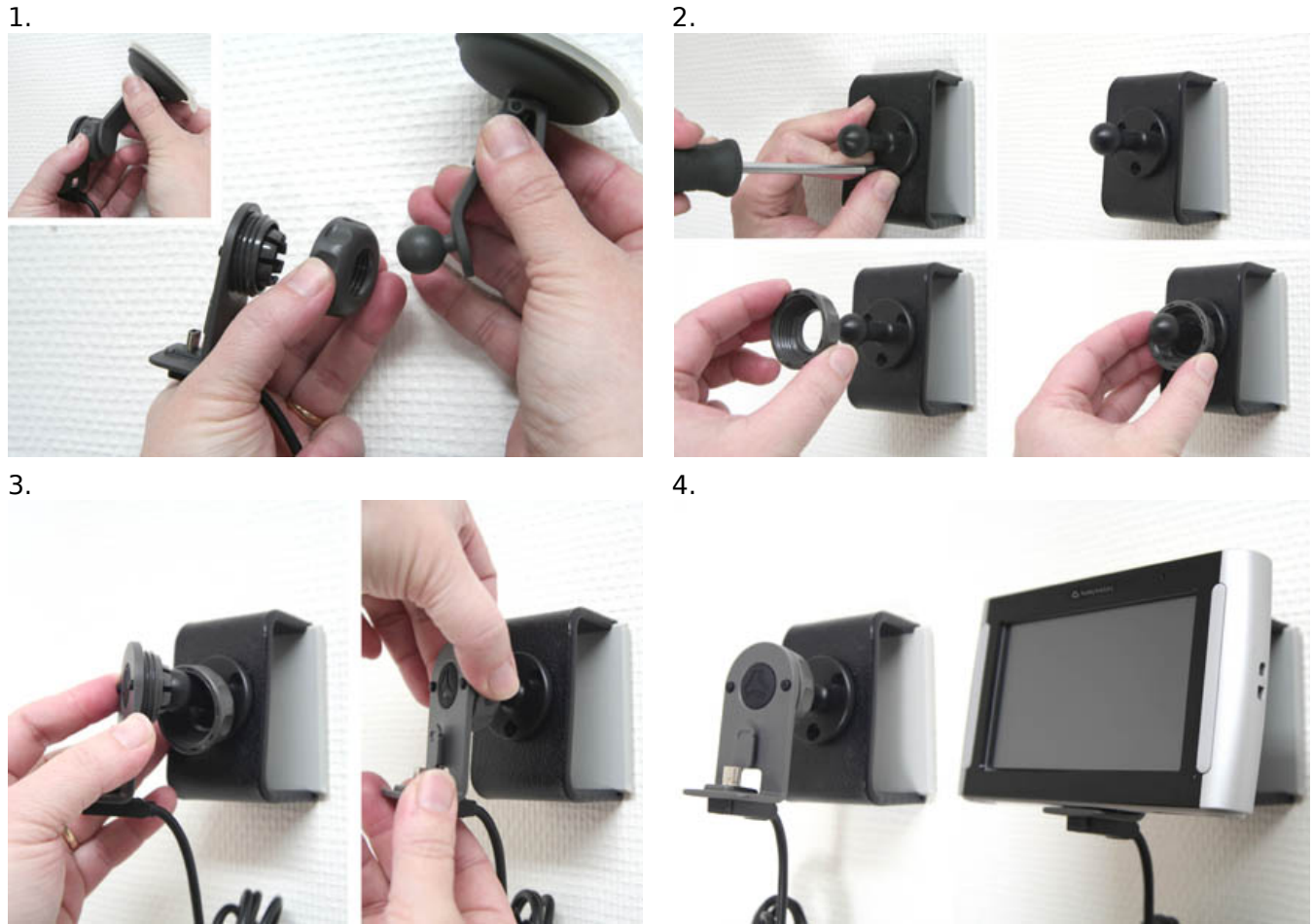
EAN: 7320282720056

#### Item no 272005 fits:

Becker Active 43 Talk (For all countries)  
Becker Active 43 Traffic (For all countries)  
Becker Active 43 Transit (For all countries)  
Becker Active 50 (For all countries)  
Becker Ready 43 (For all countries)  
Becker Ready 43 Talk (For all countries)  
Becker Ready 43 Traffic (For all countries)  
Becker Ready 50 (For all countries)  
Becker Traffic Assist Z098 (For all countries)  
Becker Traffic Assist Z100 Crocodile (For all countries)  
Becker Traffic Assist Z101 (For all countries)  
Becker Traffic Assist Z102 (For all countries)  
Becker Traffic Assist Z108 (For all countries)  
Becker Traffic Assist Z112 (For all countries)  
Becker Traffic Assist Z113 (For all countries)  
Becker Traffic Assist Z116 (For all countries)  
Becker Traffic Assist Z201 (For all countries)  
Becker Traffic Assist Z203 (For all countries)  
Becker Traffic Assist Z204 (For all countries)  
Becker Traffic Assist Z205 (For all countries)  
Becker Traffic Assist Z213 (For all countries)  
Becker Traffic Assist Z215 (For all countries)  
Mio Moov 200 (For all countries)  
Mio Moov 330 (For all countries)  
Mio Moov 370 (For all countries)  
Mio Moov 580 (For all countries)  
Mio Moov M610 (For all countries)  
Navman F10 (For all countries)  
Navman MY30 (For all countries)  
Navman MY500XT (For all countries)  
Navman MY50T (For all countries)  
Navman MY55T (For all countries)  
Navman S30 (For all countries)  
Navman S50 (For all countries)  
Navman S70 (For all countries)  
Navman S90i (For all countries)



## INSTALLATION INSTRUCTIONS



Please read all of the instructions and look at the pictures before attaching the mount.

1. Loosen the screw the same way as the picture.

2. Place the 272005- mount in the desired position and attach it with the enclosed screws. Place the locking ring onto the 272005-mount. NOTE: It is important to put the ring the right way onto the mount (as shown in picture).

3. Press the original mount onto the 272005-mount. Lock the original mount onto the 272005-mount by tightening the locking ring.

4. The mount is in place, with device in place.